



WHEN PERFORMANCE COUNTS...



Ferry Industries' RotoCure Process Control, utilizes the Windows® operating system to provide unprecedented control features for RotoSpeed™ rotational molding machines.

This easy-to-use system includes precise process set-up and cure recipe storage, detailed tracking capabilities, process trending, fault monitoring and logging, and production data recording.

RotoCure Process Control is standard on all new machines. The RotoCure System can link with an office network for remote access of production and IRT data. This gives capability to document and analyze machine and shift operation and production performance. Older Ferry RotoSpeed machines can be retrofitted with RotoCure Process Control.

RotoCure Process Control features Ferry's multiple-function software in five sections:

1. Process Setup by Arm
2. Process Trending
3. Fault Monitoring and Maintenance Guide
4. Production Data Acquisition
5. Cure Recipe Storage & Retrieval

RotoCure Process Control Manager Overview:

- Configure process parameters for oven, intermediate station, cooling station, and service stations
- Multiple-step curing and cool programs
- Multi-shot programs
- Password protection – multiple levels of security
- Status screen for oven temperature, oven time, cooling time, arm rotation speeds
- Trending screens for recording machine activity
- On-screen display of error messages and self-diagnostics.
- On-screen display of machine operating instructions and adjustments

- On-screen display of real-time arm and plate rotation speeds
- Storage and retrieval of cure recipes, mold codes and scrap codes
- Ability to record and generate reports for:
 1. Production
 2. Material Usage
 3. Reasons for scrap
 4. Downtime caused by machine
 5. Downtime caused by operator
- Ability to network with RotoLog 5.0 WiFi and IRT
- Customer-supplied system networking capability
- Remote internet access for trouble-shooting

Hardware Specifications:

- Windows based PC
- 17" Flat screen color monitor
- Industrial keyboard with mouse
- Crash protection & system back-up

ROTOCURE - EXCLUSIVE PROCESS CONTROL SYSTEM FOR FERRY'S ROTOSPEED ROTATIONAL MOLDING MACHINES



PROCESS SETUP BY ARM:

RotoCure Process Control is designed to encompass all of your rotational molding process requirements, such as:

- Easy programming of process variables (cure/cycle recipes) assures that parts are run consistently
- Configure unique parameters for each arm for each station
- Display of complete cycle programs

PROCESS TRENDING:

The System records real-time parameters of arm and cycle functions for immediate display and for production reporting.

- Oven temperature profiles and tracking
- Arm cycle tracking and arm & plate rotation speed tracking
- Cooling cycle tracking
- IRT tracking

FAULT MONITOR & MAINTENANCE:

Very sophisticated yet easy-to-use operations, troubleshooting, fault diagnostics and maintenance programs are built in.

- Announce faults
- Diagnose faults
- Troubleshooting guide
- Maintenance guide
- Operations guide

PRODUCTION DATA ACQUISITION:

RotoCure Process Control is equipped with an extensive and versatile production reporting program. Generally, these reports are accessed and viewed or printed from the office computer.

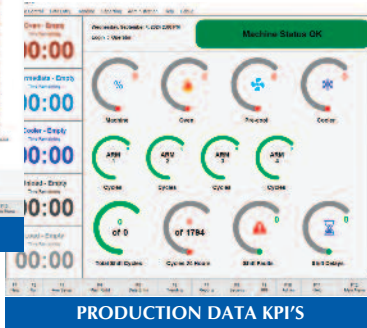
- Real-time KPI's
- Production reports
- Mold data maintenance
- Mold listing
- Scrap report
- Material usage
- Fault report
- Cure changes by operator

CURE RECIPE STORAGE AND RETRIEVAL:

- Ability to create and save programs and codes for production programming
- Retrieval and renaming of stored programs and codes for production programming

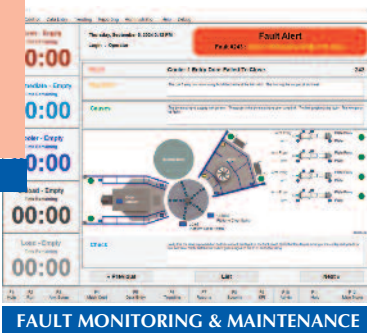
SYSTEM COMPATABILITY:

Capability to integrate with Ferry's RotoLog 5.0 WiFi and InfraRed Thermometry (IRT) are other advantages of this sophisticated system.



CURE STORE

Cure	Cure Time (min)	Cure Temp (°F)	Cure Speed (RPM)	Plate Speed (RPM)	Remarks
1	10	300	10	10	
2	15	300	10	10	
3	20	300	10	10	
4	25	300	10	10	



4445 Allen Road • Stow, OH 44224 • U.S.A. • Ph: +1.330.920.9200 • Fx: +1.330.920.4200
www.ferryindustries.com • sales@ferryindustries.com

Note: Specifications subject to change without notice. © 2024 FERRY INDUSTRIES, INC.

